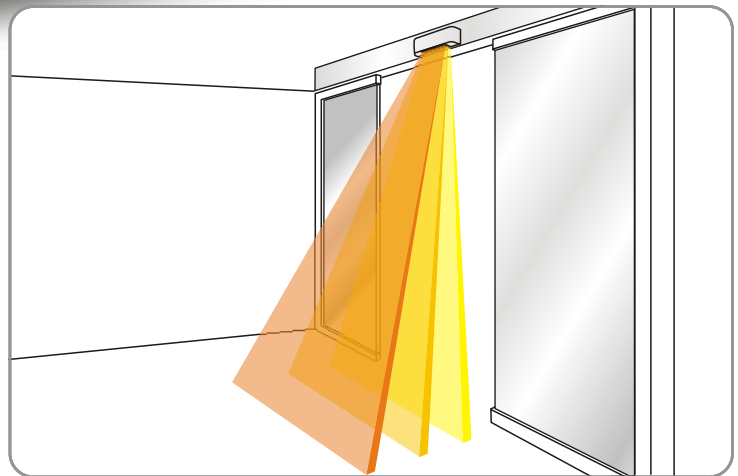
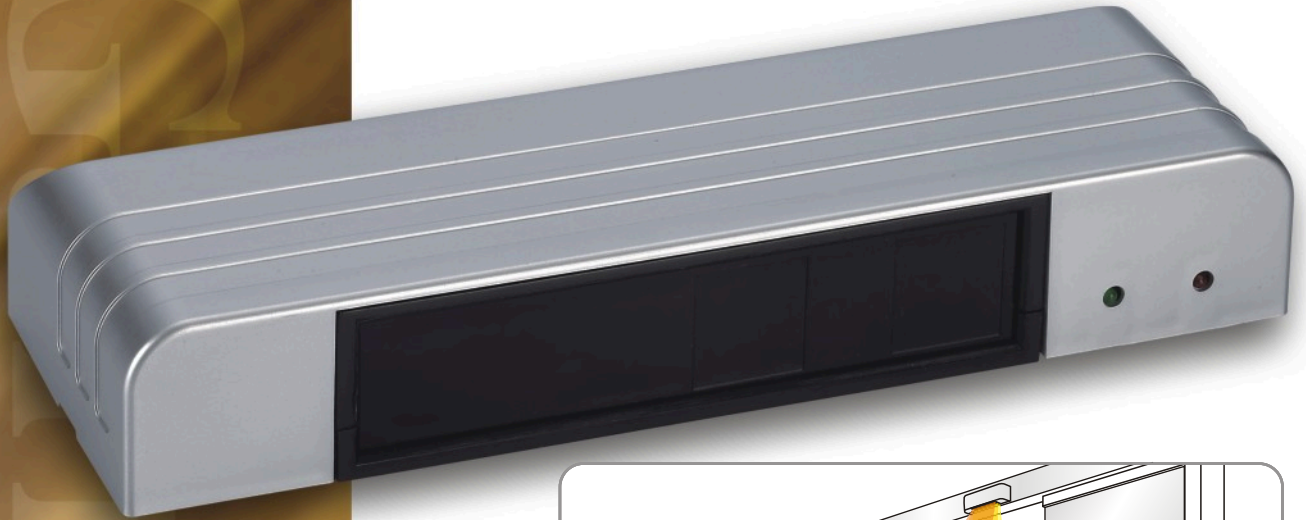
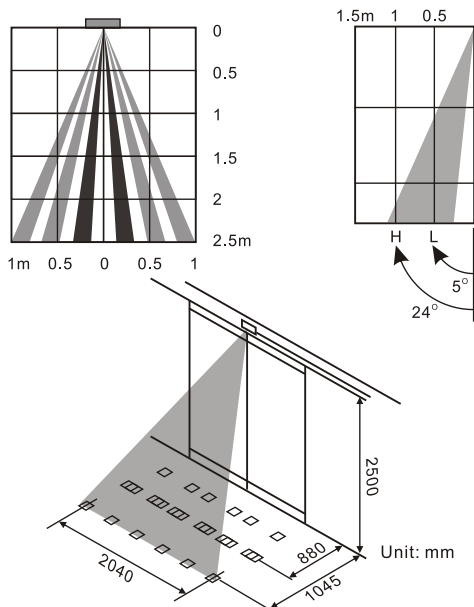


Auto-Door Sensor



■ Detection area

Front view

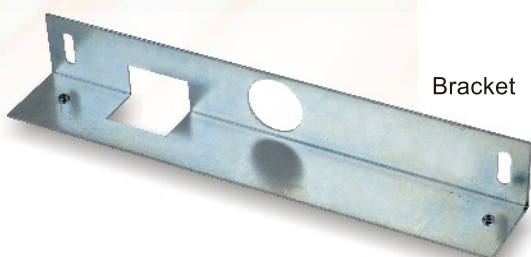


The SRE-301 active infrared movement detector has been designed to control the opening of automatic doors. The transmitter (infrared LED) emits near infrared light to a focused surface. The controller monitors the normal reflection level, once there is a change in the normal reflection level, due to the presence of person or object, the output relay is activated.

■ Specification

Detection method	Active infrared reflective detection
Installation height	2.7m (9ft) max.
Sensitivity adjustment	Adjustable
Detection angle	5~24° adjustable
Relay release time	1~5 sec. adjustable
Power supply	12V AC/DC or 24V AC/DC (grey wires)
Power consumption	180mA(max.)
Capacity of relay contact	0.5A, 24V
Available output contact	N.O. (yellow wires)
LED indication	Red: standby, Green: detecting
Color	Silver
Operating temperature	-20~+55°C
Dimension / Weight	210x73x33 mm / 450g
Accessories	2.8m connection cable with plug, 2pcs mounting screws, pattern paper.

■ Optional



Bracket